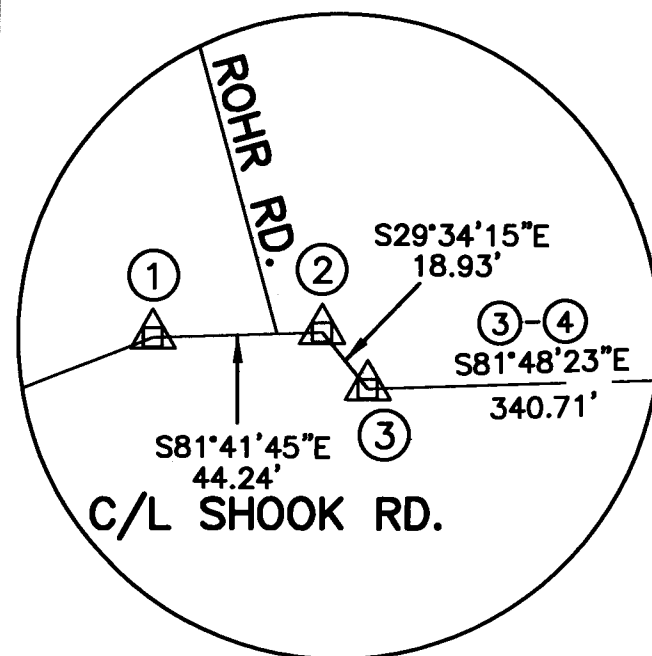
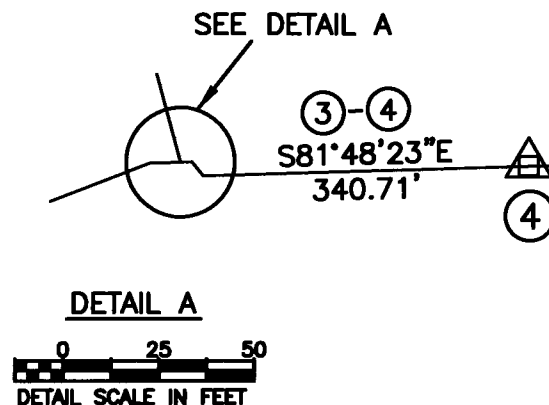




C/L SCALE IN FEET



SEE DETAIL A



# CENTERLINE SURVEY PLAT

ROHR RD., CO. RD. #235

SHOOK RD.

TO ALUM CREEK DR.

**FRANKLIN COUNTY, OHIO  
HAMILTON & MADISON TOWNSHIPS  
CONGRESS LANDS (EAST OF THE SCIOTO)  
SEC. 25, 36, T4N, R22W  
SEC. 31, T11N, R21W**



C/L ROHR RD.

S80°06'54"E  
857.75'

C/L ALUM CREEK DR  
N24°35'40"W  
577.05'

SEC. 25  
SEC. 36

— N24:35:40  
577.05' —

~~N24°35'40" N  
352.12'~~

MADISON TWP.  
HAMILTON TWP.

SEC. 31  
SEC. 36

S80°06'54"E  
2000.01'

## SURVEY CONTROL POINTS

[illegible]

## LEGEND

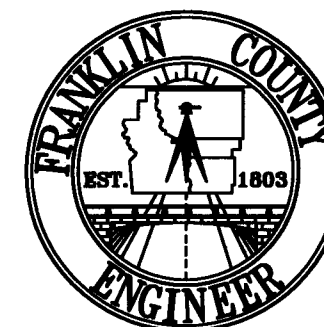
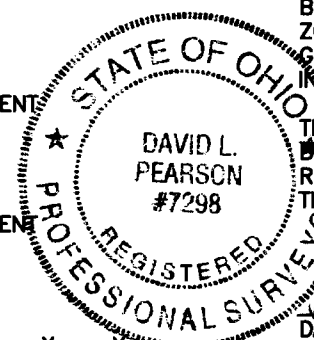
FD	STATION OF CENTERLINE SURVEY	
STA	RAILROAD SPIKE	
RRS	PARKER KAYLON NAIL	
PK	MONUMENT BOX ASSEMBLY / CONC. MONUMENT	
MON BOX	POINT OF CURVATURE	
PC	POINT OF TANGENCY	
PT	POINT ON TANGENT	
POT	POINT OF INTERSECTION / ANGLE POINT	
PI	MONUMENT BOX ASSEMBLY / CONC. MONUMENT	
□	SURVEY POINT FOUND (RRS, IP, PK, ETC.)	
○	SURVEY POINT SET (RRS, IP, PK, ETC.)	
●	STONE	
○	ANGLE POINT	
△	FENCE LINE	— x — x — x — x —
<i>P</i>	PROPERTY LINE	_____
<i>C/L</i>	CENTERLINE	_____
	SECTION / VMS LINE	- - - - -
	COUNTY LINE	_____
	TOWNSHIP LINE	_____
<i>R/L</i>	RIGHT OF WAY LINE	_____

### **BASIS OF BEARINGS:**

BEARINGS ARE BASED ON THE OHIO STATE PLANE COORDINATE SYSTEM, SOUTH ZONE AND NORTH AMERICAN DATUM OF 1983, (NSRS 2007), AS ESTABLISHED FROM A GPS SURVEY PERFORMED BY THE FRANKLIN COUNTY ENGINEER'S SURVEY DEPARTMENT IN 2010. OCCUPYING MONUMENTS "FCGS 9963", "FCGS 9927".

THIS PLAT WAS PREPARED FROM AN ACTUAL FIELD SURVEY PERFORMED BY THE FRANKLIN COUNTY ENGINEER'S OFFICE, ALONG WITH PUBLIC RECORDS ON FILE IN THE FRANKLIN COUNTY RECORDER'S OFFICE AND THE FRANKLIN COUNTY ENGINEER'S OFFICE.

DAVID L. PEARSON  
OHIO REGISTERED SURVEYOR NO. 7298

DATE 17

**DATE:** 12-21-11

**DRAWING: 0235-03**  
**DRAWN BY: MJR**

REVISIONS		
DATE	DESCRIPTION	BY